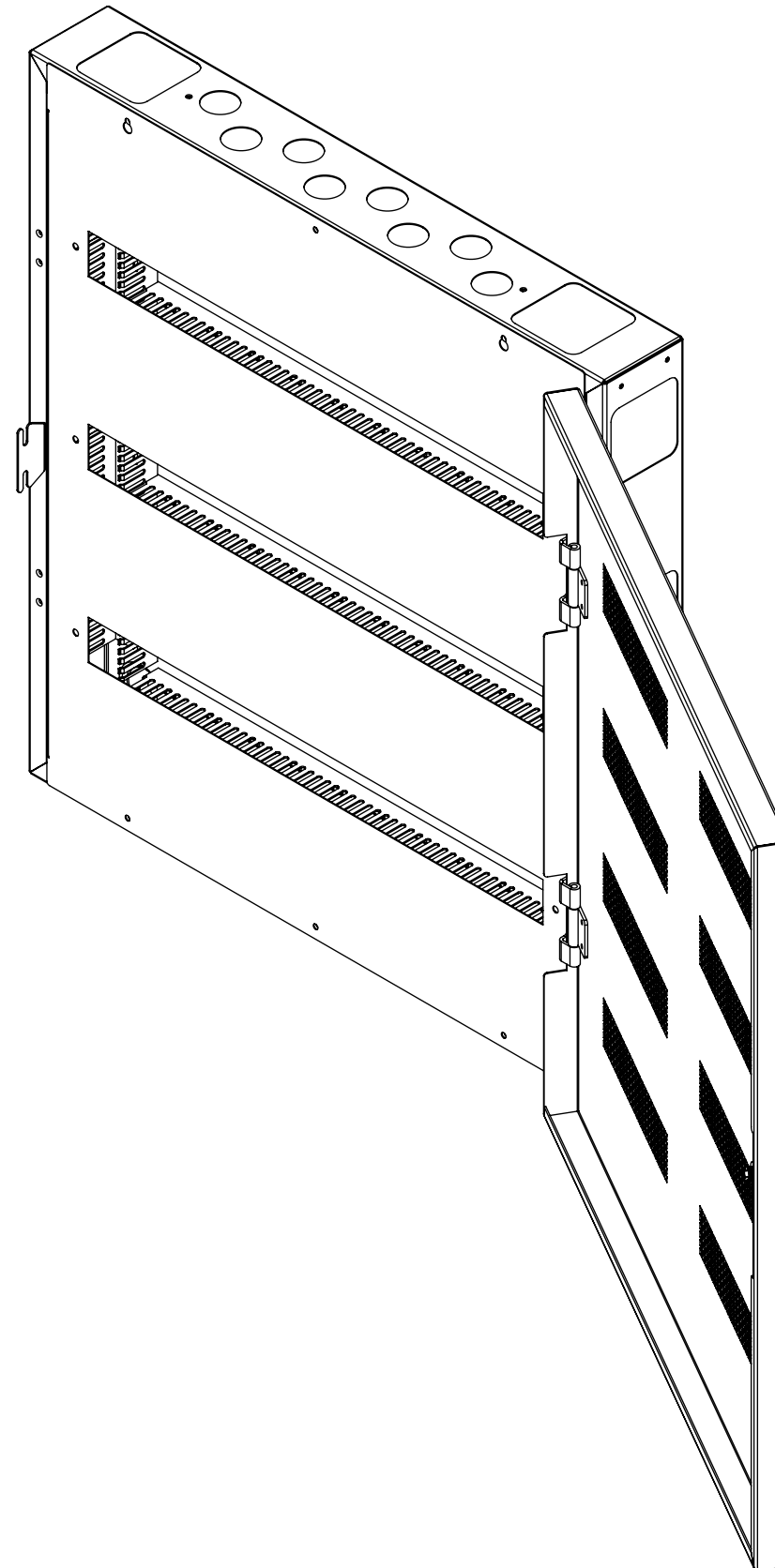


KNX3

KNX CONTROL PANEL - 3 RAIL



future automation



KNX3

KNX CONTROL PANEL - 3 RAIL



future automation

SPECIFICATION	MEASUREMENTS
Product Dimensions	750mm (29.5") x 690mm (27.2") x 141.5mm (5.6")
Number of DIN Rails	3
Finish (Custom Available)	Lid - Black (RAL9005) Textured Paint, Box - Zintec Coated Steel
Depth From Wall	141.5mm (5.6")
Wall Mount Type	8mm (0.31") Keyhole Slots
Shipping Dimensions	860mm (33.9") x 840mm (33.0") x 240 (9.5")
Shipping Weight	22Kg (49lbs)

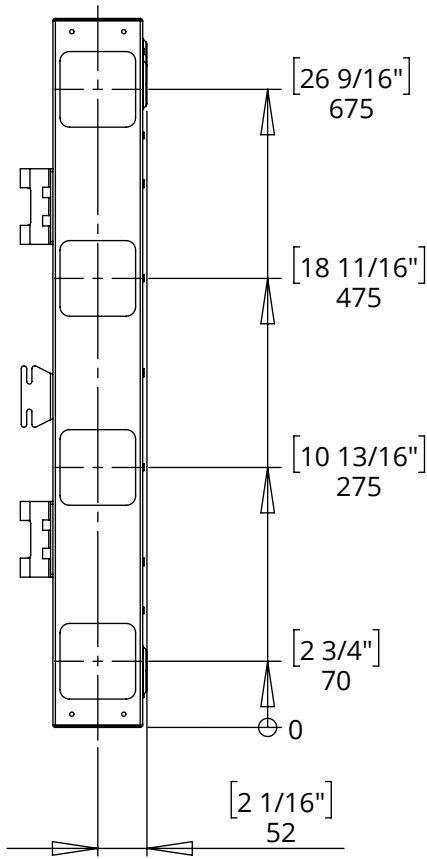
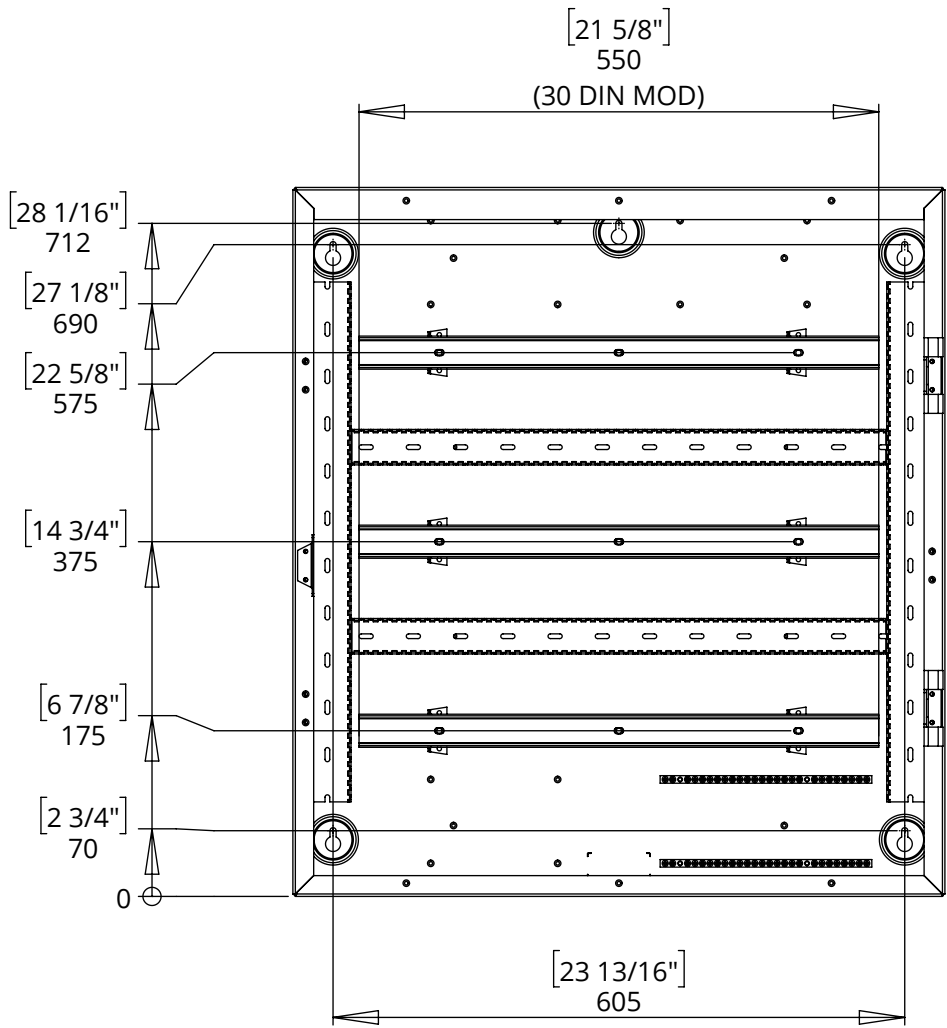
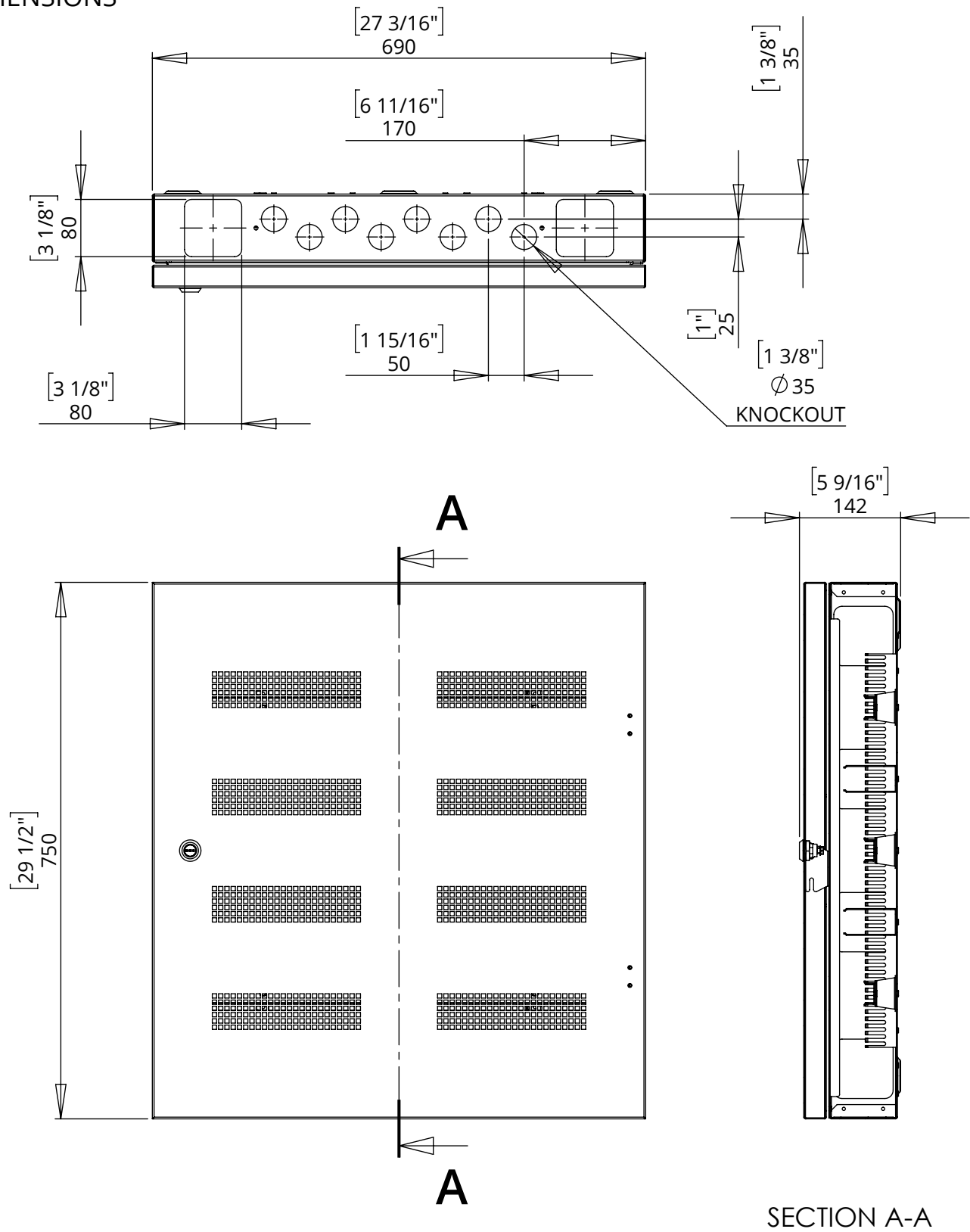
KNX3

KNX CONTROL PANEL - 3 RAIL



future automation

DIMENSIONS

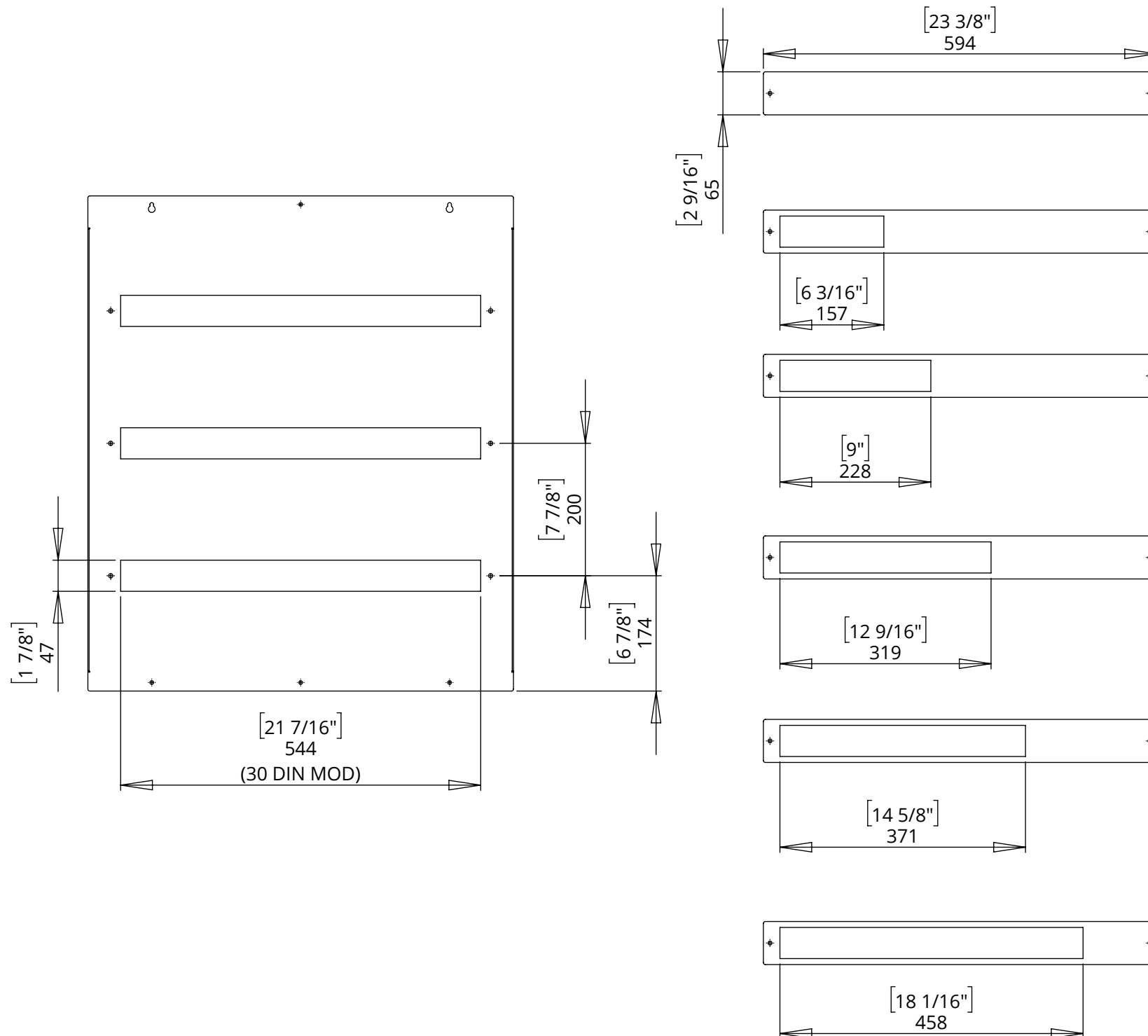


KNX3

KNX CONTROL PANEL - 3 RAIL

COVER PANEL AND OPTIONAL EXTRAS

OPTION - TRIM COVERS
BLANK & SLOT SIZES 157,228, 319, 371 & 458mm.
ALLOWS FOR NEAT FINISHING WITH DIFFERENT
SET UPS OF BREAKER AND MODULES



OPTION - ADDITIONAL EARTH/NEUTRAL BARS & TRUNKING
TRUNKING CAN BE ADDED TO TOP AND BOTTOM ENDS OF PANEL
ALONG WITH EARTH/NEUTRAL BARS IN REMAINING SPACES

S = STANDARD FITMENT
O = OPTIONAL

